

BVP-19CTLG-00
OCTOBER 2019
© 2019 Isuzu Motors Ltd. All Rights Reserved.



ISUZU
BEST VALUE PARTS

Parts Operations Department
ISUZU MOTORS LIMITED



ISUZU
BEST VALUE PARTS

2019-2020
BEST VALUE PARTS
AT GREAT PRICES

AIR CLEANER ELEMENTS

No	BVP Part Number	Corresponding Genuine Part Number	INNER/ OUTER	Vehicle Model	Engine Model	
1	1-87610166-0	1-14215213-0	OUTER	EX*,CX*,CY*	6W*,6U*,6H*	
2	1-87610230-0	1-14215203-0	OUTER	EX*,CX*,CY*	6W*,6U*,6H*	
3	1-87610231-0	1-14215217-0	INNER	EX*,CX*,CY*	6W*,6U*,6H*	
4	1-87610058-1	1-14215181-0	OUTER	FV*	6HE,6HH	
5	1-87610151-0	1-14215125-0	INNER	FV*	6HE,6HH	
6	1-87610232-0	8-98071423-0	OUTER	FV*	6HK,6HF	
7	1-87610233-0	8-98071424-0	INNER	FV*	6HK,6HF	
8	1-87610113-2	8-98071421-0	OUTER	FR*,FT*,FV*	6HK,4HK	
9	1-87610114-1	8-98071422-0	INNER	FR*,FT*,FV*	6HK,4HK	
10	1-87610117-0	1-14215172-0	OUTER	FR*,FT*,FV*	6SD,6HH	
11	1-87610118-1	1-14215111-0	INNER	FR*,FT*,FV*	6SD,6HH	
NEW	12	1-87615001-0	8-98315443-0	OUTER	FXZ,GXZ	6NX
NEW	13	1-87615000-0	8-97948921-0	INNER	FXZ,GXZ	6NX
14	5-87610250-0	8-97062294-0	—	NP*,NQ*,NM*	4H*	
15	5-87610148-0	8-97173210-0	—	NK*,NP*,NQ*	4JB,4JG	
16	5-87610233-0	8-94156052-0	—	NKR,QKR	4JB,4JH,4JG,4HF,4HG	
NEW	17	5-87615040-0	8-98321413-0	—	NPR,NQR,NLR,NMR,NPS	4HG,4HL,4HK,4JB,4JJ
NEW	18	5-87615041-0	8-98390326-0	—	PHR	4JA1-T
19	5-87610018-0	8-97039002-0	—	TB*,TF*,UBS	22L,C22,6V*	
20	5-87615001-0	8-98140265-0	—	TF*,UC*	4JJ,4JK	
21	5-87615002-0	8-98140266-0	—	TF*,UC*	4JA,4JJ,4JK	
22	5-87615004-0	8-98027480-0	—	TF*,UC*	4JJ,4JK	
23	5-87615003-0	8-97944570-0	—	TF*,UC*	4JA,4JJ,4JK	

UREA FILTER

No	BVP Part Number	Corresponding Genuine Part Number	Vehicle Model	Engine Model
NEW	1-87610234-0	8-98350716-0 8-98169403-0	E*,C*,F*,N*	ALL Euro 6



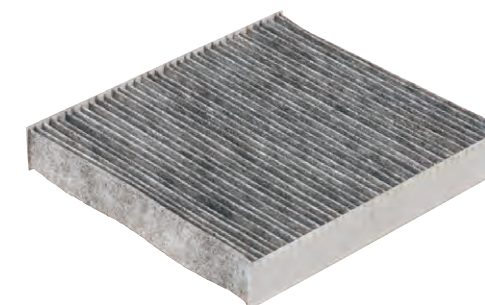
OIL FILTER ELEMENTS

No	BVP Part Number	Corresponding Genuine Part Number	Spec.	Vehicle Model	Engine Model
1	1-87610167-1	1-13240233-0	MAIN	E*,C*,F*	6W*,6U*
2	1-87610059-0	1-13240234-1	PARTIAL	FX*,FY*,GX*	6U*
3	1-87610168-0	1-13240241-0	PARTIAL	EX*,CX*,CY*	6W*
4	1-87610065-0	1-13240163-2	PARTIAL	FV*,FXZ	6SD
5	1-87610064-0	8-94391049-4	—	F*	6H*
6	1-87610057-0	8-97148280-0	—	NPR,NQR	4BD
7	5-87610117-0	8-97148270-1 8-98328207-0	—	F*,N*	4H*
8	5-87610023-0	8-94360418-1	—	NKR	4BE
9	5-87610021-0	8-97329911-0	—	N*,TF*,UBC	4JB,4JG,4JH1
10	5-87610010-0	8-97301752-0	—	NKR,NPR,UBS	4JG,4JH
11	5-87610118-0	8-98018858-0	—	N*R	4JJ
12	5-87610009-0	8-97049708-1	—	NHR,NKR,TF*	4JA,4JB
13	5-87610017-0	8-97167972-0	MAIN	UBS	4JX
14	5-87610019-0	8-97209306-2	SUB	UBS	4JX
15	5-87610008-0	8-94456741-2	—	TF*,U*	4Z*,6V*
16	5-87615000-0	8-98165071-0	—	TF*,UC*	4JK,4JJ
17	5-87615005-0	8-97358720-0	—	TF*,UC*	4JK,4JJ
18	5-87615011-0	8-97309927-0	—	PHR,TBR,TF*	4JA,4JH



FUEL FILTER ELEMENTS

No	BVP Part Number	Corresponding Genuine Part Number	Spec.	Vehicle Model	Engine Model
1	1-87610152-0	8-98174903-0	—	EX*,CX*,CY*,F*	6W*,6U*,6H*
2	1-87610165-0	8-98123256-0	W/ SEDIMENTER	EX*,CX*,CY*	6W*
3	1-87610094-2	8-98092481-1	W/ SEDIMENTER	EX*,CX*,CY*,F*	6W*,6U*,6H*
4	1-87610093-3	8-98203599-0 8-97542540-0	W/ SEDIMENTER	F*,N*	6HK,4HK,4JJ
5	5-87610220-0	8-98095983-0	W/ SEDIMENTER	N*	4HK,4JJ,4JB
6	1-87610054-1	8-94394079-2	—	F*	6HH
7	1-87610053-1	8-98036654-0	—	F*,NPR,NQR	6SD,6H*,4HE
8	5-87610094-0	8-98037480-0	W/ SEDIMENTER	NKR	4JH
9	5-87610157-0	8-98037481-0	W/ SEDIMENTER	NP*,NQ*,NM*	4HK,4JB,4JJ
10	5-87610041-0	8-97172549-1	—	NK*,NP*,NQ*	4HF,4HG
11	5-87610011-0	8-94414796-3 8-94448984-1	—	N*,QKR,TBR,TF*	4HF,4HG,4JA,4JB,4JH
12	5-87615017-0	8-98159693-0	MAIN	TF*,UC*	4J*,R24E
13	5-87615024-0	8-98194119-0	PRE	TF*,UC*	4J*,R24E
14	5-87615012-0	8-98149982-0	—	TF*,UC*	4JJ,4JK



BLOWER UNIT FILTERS

No	BVP Part Number	Corresponding Genuine Part Number	Spec.	Vehicle Model	Engine Model	
1	5-87615018-0	8-98139428-0	With Charcoal	TF*	4J*	
NEW	2	5-87615030-0	8-98139428-0	Without Charcoal	TF*	4J*

- Genuine parts are only available with activated charcoal.
- BVP is available either with activated charcoal or without activated charcoal.

WATER PUMPS

No	BVP Part Number	Corresponding Genuine Part Number	Vehicle Model	Engine Model
1	5-87610089-0	8-97363478-0	F*R,FSS,N*R,NPS	4HK
2	5-87610093-0	8-97314118-0	NPS,NPR,NQR	4HE
3	5-87610088-1	8-97105012-5	N*R,PHR	4JA,4JB



ENGINE FOOT RUBBERS

No	BVP Part Number	Corresponding Genuine Part Number	Position	Vehicle Model	Engine Model
1	1-87610162-0	1-53215172-0	Right / Left	F*	6HF,6HH,6HK
2	5-87610187-0	8-97080620-0	Right	N*R,QKR	4JB,4JG
3	5-87610188-0	8-97080621-0	Left	N*R,QKR	4JB,4JG
4	5-87610191-0	8-97120497-1	Right	NPR,NQR	4HE,4HF,4HG
5	5-87610192-0	8-97120498-1	Left	NPR,NQR	4HE,4HF,4HG
6	5-87610189-0	8-97122893-1	Right	N*R	4HF,4HG,4JH
7	5-87610190-0	8-97122895-1	Left	N*R	4HF,4HG,4JH
8	5-87610196-0	8-97201669-0	Right	NPR,NQR	4HF,4HG
9	5-87610195-0	8-97201671-0	Left	NPR,NQR	4HF,4HG
10	5-87610194-0	8-97039189-3	Right	TBR,TF*,UBS	4JA,4JB,4JG
11	5-87610193-0	8-97086076-1	Left	TBR,TF*	4JA,4JB,4JG



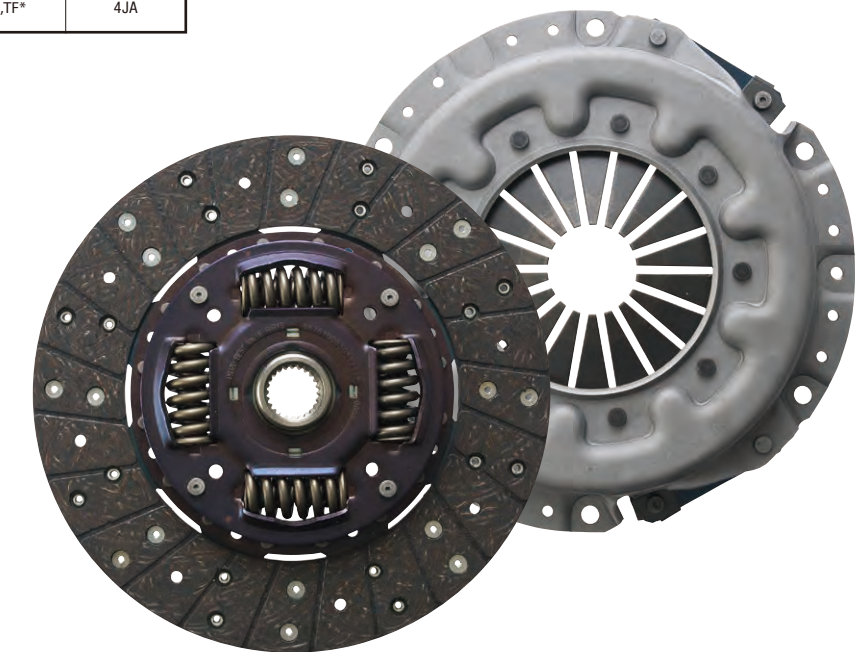
BELTS

No	BVP Part Number	Corresponding Genuine Part Number	TYPE	Vehicle Model	Engine Model
1	1-87610236-0	1-13671463-1	COOL	EX*,CX*,CY*	6WF,6WG
2	1-87610185-0	8-97604138-1	A/C	EX*,CX*,CY*	6WF,6WG
3	1-87610221-0	1-13671464-1	A/C	EXR,CYH,CYZ,FVR	6WG,6SD
4	1-87610186-0	1-13671411-0	COOL	FV*,FX*,GX*	6SD
5	1-87610101-0	8-97603283-0	COOL	FX*,FY*,GX*	6UZ,6UV
6	1-87610187-0	8-97604086-0	A/C	FX*,FY*,GX*	6UZ,6UV
7	1-87610222-0	1-13671127-0	A/C	EXZ,CXH,FSS,FTS	10PD1,6HH1,6RB1
8	1-87610223-0	8-94395172-0	A/C	F*R,FSS,FTS	6HE,6HK
9	1-87610188-0	8-97605102-0	A/C	FR*,FS*,FT*,FV*	6HK
10	1-87610237-0	8-97611859-1	COOL	FR*,FS*,FT*,FV*	6HK
11	1-87610238-0	8-97611860-0	COOL	FR*,FS*,FT*,FV*	6HK
12	1-87610240-0	8-97383577-1	A/C	FR*,FS*,FT*,FV*	4HK
13	1-87610239-0	8-98020247-0	COOL	FR*,FS*,FT*,FV*	4HK,4JJ,4JK
14	5-87610258-0	8-98010841-1	A/C	N*R,NPS	4HK
15	5-87610263-0	8-98003187-0	COOL	N*	4HK,4JJ
16	5-87610264-0	8-98038423-0	COOL	FRR,NN*,NP*,NQ*	4HK
17	5-87610267-0	8-97180183-3	A/C	N*	4HF,4HG
18	5-87610261-0	8-97180199-1	COOL	N*R	4H*
19	5-87610265-0	8-94161841-0	COOL	NHR,NKR,TF*	4JA,4JB
20	5-87610262-0	8-97362926-0	COOL	N*,TF*,UC*	4JJ,4JK
21	5-87610236-0	8-98088385-0	A/C	N*,TF*	4JJ
22	5-87610266-0	8-97085131-0	P/S	N*R,QKR	4JB,4JG
23	5-87610099-0	8-97222419-1	COOL	UBS	4JX

* COOL = COOLING FAN BELT * A/C = AIR COMPRESSOR BELT
* P/S = POWER STEERING PUMP BELT

CLUTCH DISCS

No	BVP Part Number	Corresponding Genuine Part Number	SIZE	Vehicle Model	Engine Model
1	1-87610196-0	1-31240980-1	φ430	CX*,CY*,FG*	6WG,6UZ
2	1-87610119-0	8-98185180-1	φ380	F*	6HK
3	1-87610142-0	1-31240889-1	φ380	F*	6SD,6HK
4	1-87610198-0	1-31240735-2	φ380	FV*,GV*,FXZ	6SD,6H*
5	1-87610197-0	1-31240977-2	φ380	FV*,GVR	6HK
6	1-87610179-0	1-31240902-1	φ380	FTR,FV*	6HE,6HK
7	1-87610140-0	1-31260040-2	φ350	F*	6HK,4HK
8	1-87610139-0	1-31240901-1	φ350	F*	6HE,6HH
9	5-87610240-0	8-98164918-1	φ325	NP*	4HK
10	5-87610080-1	8-98255140-1	φ325	N*	4HK
11	5-87610092-0	8-98164917-1	φ325	NNR,NPR,NQR	4HE,4HK
12	5-87610049-2	8-98255959-1	φ300	N*R,NPS	4HF,4HG,4JH
13	5-87610078-1	8-98255962-1	φ300	N*	4HE,4HG,4JH
14	5-87610077-1	8-98255139-1	φ300	N*R,NPS	4HV,4JJ
15	5-87610107-0	8-97310275-0	φ260	NKR	4JA,4JB
16	5-87610083-0	8-98080661-0	φ250	N*R	4JB,4JH
17	5-87610108-0	8-97070657-0	φ240	NHR,NKR	4JB
18	5-87610084-0	8-97368063-0	φ240	N*R	4JB
19	5-87615008-0	8-97946171-0	φ275	TF*,UC*	4JJ
20	5-87615007-0	8-97945679-0 8-97500685-0	φ250	TF*,UC*	4JJ,4JK
21	5-87615019-0	8-97947166-0	φ250	TF*,UC*	4JJ,4JK
22	5-87610125-0	8-97368062-0	φ240	TF*	4JB
23	5-87615006-0	8-97941521-0	φ225	TF*	4JA
24	5-87610086-0	8-97368061-0	φ225	TBR,TF*	4JA



PRESSURE PLATES

No	BVP Part Number	Corresponding Genuine Part Number	SIZE	Vehicle Model	Engine Model
1	1-87610145-0	1-31220380-2	φ380	FV*,FXZ	6SD,6HF,6HK
2	1-87610146-0	1-31220377-2	φ380	FRR,FTR,FVM	6H*
3	1-87610120-0	1-31220374-2	φ380	FRR,FT*,FV*,FX*	6HK
4	1-87610180-0	1-31220373-2	φ380	FTR,FVR,FVM	6HE
5	1-87610147-0	1-31220411-0	φ350	F*R,FSS	4HK
6	1-87610144-0	1-31220447-0	φ350	F*R	6HH
7	5-87610104-0	8-97038831-2	φ325	NNR,NPR,NQR	4HE,4HK
8	5-87610079-0	8-97169534-0	φ300	N*R,NPS	4HE,4HK
9	5-87610050-1	8-97310796-0	φ300	N*R,NPS	4HG
10	5-87610091-0	8-98040093-0	φ300	N*R,NLS	4JJ
11	5-87610144-0	8-97259693-0	φ300	N*R	4JH,4JJ
12	5-87610082-0	8-97109246-0	φ250	N*R,TF*	4JB,4JG,4JH
13	5-87610085-0	8-94259132-1	φ240	N*R	4JB
14	5-87615020-0	8-97944507-2	φ275	TF*,UC*	4JJ
15	5-87615009-0	8-97941522-0 8-97947516-0	φ250	TF*,UC*	4JJ,4JK
16	5-87610087-0	8-94435011-1	φ225	TBR,TF*	4JA
17	5-87615010-0	8-97943331-0	φ225	TF*	4JA

CLUTCH KITS for CV

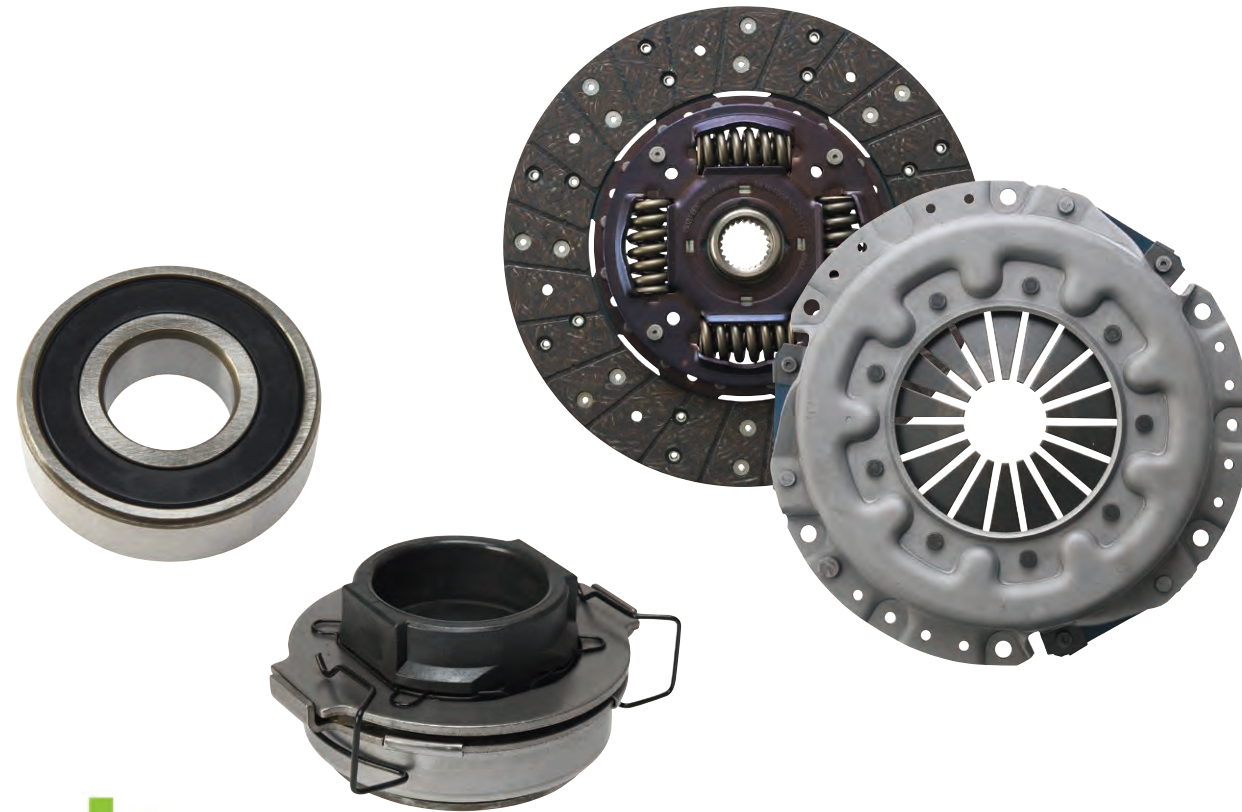
No	BVP KIT Part Number	Content of BVP KIT(P/N)	Corresponding Genuine Part Number	PART Description	Vehicle Model	Engine Model
1	1-87610181-0	1-87610179-0	1-31240902-1	DISC;CLUTCH, φ380	FTR,FVR, FVM,GVR	6HE
		1-87610180-0	1-31220373-2	PLATE ASM; PRESSURE, CLUTCH		
		1-87610148-0	1-09820114-0	BEARING; CLUTCH RELEASE		
		1-87610157-0	8-94392288-0	BEARING; PILOT, TOP GEAR SHAFT"		
2	1-87610175-0	1-87610119-0	8-98185180-1	DISC; CLUTCH, φ380	FRR,FSR, FT*,FV*	6HK
		1-87610120-0	1-31220374-2	PLATE ASM; PRESSURE, CLUTCH		
		1-87610109-0	1-31310026-0	BEARING; CLUTCH RELEASE		
		1-87610157-0	8-94392288-0	BEARING; PILOT, TOP GEAR SHAFT		
3	1-87610190-0	1-87610119-0	8-98185180-1	DISC; CLUTCH, φ380	FRR,FSR, FT*,FV*	6HK
		1-87610146-0	1-31220377-2	PLATE ASM; PRESSURE, CLUTCH		
		1-87610108-0	1-09820117-0	BEARING; CLUTCH RELEASE		
		1-87610157-0	8-94392288-0	BEARING; PILOT		
4	1-87610191-0	1-87610119-0	8-98185180-1	DISC; CLUTCH, φ380	FRR,FSR, FT*,FV*	6HK
		1-87610146-0	1-31220377-2	PLATE ASM; PRESSURE, CLUTCH		
		1-87610109-0	1-31310026-0	BEARING; CLUTCH RELEASE		
		1-87610157-0	8-94392288-0	BEARING; PILOT		
5	1-87610192-0	1-87610142-0	1-31240889-1	DISC; CLUTCH, φ380	FRR, FT*,FV* FXZ, GVR	6HK
		1-87610120-0	1-31220374-2	PLATE ASM; PRESSURE, CLUTCH		
		1-87610108-0	1-09820117-0	BEARING; CLUTCH RELEASE		
		1-87610157-0	8-94392288-0	BEARING; PILOT		
6	1-87610193-0	1-87610142-0	1-31240889-1	DISC; CLUTCH, φ380	F*R,FVM	6HK
		1-87610146-0	1-31220377-2	PLATE ASM; PRESSURE, CLUTCH		
		1-87610108-0	1-09820117-0	BEARING; CLUTCH RELEASE		
		1-87610157-0	8-94392288-0	BEARING; PILOT		
7	1-87610199-0	1-87610197-0	1-31240977-2	DISC; CLUTCH, φ380	FV*,GVR	6HK
		1-87610145-0	1-31220380-2	PLATE ASM; PRESSURE, CLUTCH		
		1-87610157-0	8-94392288-0	BEARING; PILOT, TOP GEAR SHAFT		
		1-87610108-0	1-09820117-0	BEARING; CLUTCH RELEASE		
8	1-87610200-0	1-87610198-0	1-31240735-2	DISC; CLUTCH, φ380	FV*,GV*, FXZ,GXZ	6HH,6SD, 6HE,6HK
		1-87610145-0	1-31220380-2	PLATE ASM; PRESSURE, CLUTCH		
		1-87610157-0	8-94392288-0	BEARING; PILOT, TOP GEAR SHAFT		
		1-87610108-0	1-09820117-0	BEARING; CLUTCH RELEASE		
9	1-87610195-0	1-87610139-0	1-31240901-1	DISC; CLUTCH, φ350	FRR,FSR, FSS,FTR, FTS	6HH
		1-87610144-0	1-31220447-0	PLATE ASM; PRESSURE, CLUTCH		
		1-87610148-0	1-09820114-0	BEARING; CLUTCH RELEASE		
		1-87610157-0	8-94392288-0	BEARING; PILOT		

CLUTCH KITS for CV

No	BVP KIT Part Number	Content of BVP KIT(P/N)	Corresponding Genuine Part Number	PART Description	Vehicle Model	Engine Model
10	1-87610194-0	1-87610140-0	1-31260040-2	DISC; CLUTCH, φ350	FRR,FSS, FTR	4HK
		1-87610147-0	1-31220411-0	PLATE ASM; PRESSURE, CLUTCH		
		1-87610108-0	1-09820117-0	BEARING; CLUTCH RELEASE		
		5-87610164-0	8-97258239-0	BEARING; PILOT		
11	5-87610234-0	1-87610140-0	1-31260040-2	DISC; CLUTCH, φ350	FRR,FSR, FSS,FTR	4HK
		1-87610147-0	1-31220411-0	PLATE ASM; PRESSURE, CLUTCH		
		1-87610109-0	1-31310026-0	BEARING; CLUTCH RELEASE		
		5-87610164-0	8-97258239-0	BEARING; PILOT		
12	5-87610232-0	5-87610092-0	8-98164917-1	DISC; CLUTCH, φ325	NNR,NPR, NQR	4HE,4HK
		5-87610104-0	8-97038831-2	PLATE ASM; PRESSURE, CLUTCH		
		1-87610110-0	1-31310012-0	BEARING; CLUTCH RELEASE		
		5-87610164-0	8-97258239-0	BEARING; PILOT, TOP GEAR SHAFT		
13	5-87610204-0	5-87610080-1	8-98255140-1	DISC; CLUTCH, φ325	NNR,NPR, NPS,NQR	4HK
		5-87610104-0	8-97038831-2	PLATE ASM; PRESSURE, CLUTCH		
		5-87610110-0	8-97255313-0	BEARING; CLUTCH RELEASE		
		5-87610164-0	8-97258239-0	BEARING; PILOT, TOP GEAR SHAFT		
14	5-87610205-0	5-87610049-2	8-98255959-1	DISC; CLUTCH, φ300	NKR,NLR, NMR,NPR, NPS,NQR	4HF,4HG, 4JH
		5-87610079-0	8-97169534-0	PLATE ASM; PRESSURE, CLUTCH		
		5-87610110-0	8-97255313-0	BEARING; CLUTCH RELEASE		
		5-87610164-0	8-97258239-0	BEARING; PILOT, TOP GEAR SHAFT		
15	5-87610206-0	5-87610077-1	8-98255139-1	DISC; CLUTCH, φ300	NHR,NLR, NLS,NMR, NNR,NPR	4HV,4JJ
		5-87610091-0	8-98040093-0	PLATE ASM; PRESSURE, CLUTCH		
		5-87610110-0	8-97255313-0	BEARING; CLUTCH RELEASE		
		5-87610166-0	8-97325153-0	BEARING; PILOT, TOP GEAR SHAFT		
16	5-87610-273-0	5-87610049-2	8-98255959-1	DISC; CLUTCH, φ300	NKR,NLR, NMR,NPR, NPS,NQR	4JH
		5-87610144-0	8-97259693-0	PLATE ASM; PRESSURE, CLUTCH		
		5-87610110-0	8-97255313-0	BEARING; CLUTCH RELEASE		
		5-87610166-0	8-97325153-0	BEARING; PILOT		
17	5-87610207-0	5-87610083-0	8-98080661-0	DISC; CLUTCH, φ250	NHR,NKR, NLR,NMR	4JB,4JH
		5-87610082-0	8-97109246-0	PLATE ASM; PRESSURE, CLUTCH		
		5-87610116-0	8-97316602-0	BEARING; CLUTCH RELEASE*		
		5-87610165-0	9-00090679-0	BEARING; PILOT, TOP GEAR SHAFT		

CLUTCH KITS for LCV

No	BVP KIT Part Number	Content of BVP KIT(P/N)	Corresponding Genuine Part Number	PART Description	Vehicle Model	Engine Model
18	5-87610227-0	5-87615028-0	8-97941529-0	DISC; CLUTCH φ260	TFR,TFS	6VE
		5-87615029-0	8-97941528-0	PLATE ASM; PRESSURE, CLUTCH		
		5-87610226-0	8-94377417-1	BEARING; CLUTCH RELEASE		
19	5-87610219-0	5-87615007-0	8-97945679-0	DISC; CLUTCH φ250	TFR,TFS,UCR,UCS	4JJ,4JK
		5-87615009-0	8-97941522-0	PLATE ASM; PRESSURE, CLUTCH		
		5-87610112-0	8-97316591-0	BEARING; CLUTCH RELEASE		
20	5-87610235-0	5-87615007-0	8-97945679-0	DISC; CLUTCH φ250	TFR,TFS,UCR,UCS	4JJ,4JK
		5-87615009-0	8-97947516-0	PLATE ASM; PRESSURE, CLUTCH		
		5-87610146-0	8-98096168-0	BEARING; CLUTCH RELEASE		
21	5-87610218-0	5-87615006-0	8-97941521-0	DISC; CLUTCH φ225	TFR,TFS	4JA
		5-87615010-0	8-97943331-0	PLATE ASM; PRESSURE, CLUTCH		
		5-87610111-0	8-97209197-0	BEARING; CLUTCH RELEASE		



RELEASE BEARINGS

No	BVP Part Number	Corresponding Genuine Part Number	Vehicle Model	Engine Model
1	1-87610149-0	1-09820118-0	EX*,CX*,CVR,FXZ	6W*,6UZ,6HK
2	1-87610161-0	1-31310022-0	FX*,FYH	6UZ
3	1-87610108-0	1-09820117-0	F*	6SD,6HK
4	1-87610148-0	1-09820114-0	F*R,FSS,FVM	6HE,6HH
5	1-87610109-0	1-31310026-0	F*R,FSS	6HK,4HK
6	1-87610110-0	1-31310012-0	FRR,NNR,NPR	4HK
7	5-87610145-0	8-97089652-0	N*R,NPS	4HF,4HG,4JH
8	5-87610226-0	8-94377417-1	TF*,UBS,UC*,UE*	4JJ,4JX,6VE
9	5-87610112-0	8-97316591-0	TF*,UBS,UC*	4JG,4JH,4JJ
10	5-87610113-0	8-97333487-0	PHR,TFR,TFS	4JA
11	5-87610111-0	8-97209197-0	TBR,TF*	4JA
12	5-87610146-0	8-98096168-0	TF*,UC*	4JK
13	5-87610147-0	8-98169826-1	TF*,UC*	4JJ

SHIFT BLOCKS

No	BVP Part Number	Corresponding Genuine Part Number	Vehicle Model	Engine Model
1	5-87610110-0	8-97255313-0	N*R,NPS	4HG,4HK,4JJ
2	5-87610109-0	8-98054657-0	N*R	4JB,4JG
3	5-87610116-0	8-97316602-0	N*R	4JB,4JH



PILOT BEARINGS

No	BVP Part Number	Corresponding Genuine Part Number	Vehicle Model
1	1-87610158-0	1-09800257-1	EX*,CX*,FX*
2	1-87610157-0	8-94392288-0	F*R,F*S,FVZ
3	5-87610164-0	8-97258239-0	F*R,FSS,N*R,NPS
4	5-87610166-0	8-97325153-0	N*R,NLS
5	5-87610165-0	9-00090679-0 8-97920344-2	N*R,PHR,TF*,UBS



CENTER BEARINGS

No	BVP Part Number	Corresponding Genuine Part Number	Vehicle Model
1	1-87610172-0	1-37510115-0	CVR,C*Z,FV*
2	1-87610171-0	1-37510116-0	CX*,CY*,FV*,FYH
3	1-87610170-0	8-98020881-0 1-37510105-0	F*R,GVR
4	5-87610202-0	5-37510008-0	N*R
5	5-87610203-0	8-97131143-1	NPR,NPS,NQR
6	5-87610200-0	8-98020880-0	N*R
7	5-87610201-0	8-98033936-0	N*R



HUB BEARINGS



No	BVP Part Number	Corresponding Genuine Part Number	Vehicle Model	FRT / RR	INNER / OUTER
1	5-87610177-0	8-94248077-0 8-97219065-0	NHR,NLR,NMR	FRT	INNER
2	5-87610175-0	8-97219066-0 9-00032206-0	NHR,NLR,NMR	FRT	OUTER
3	1-87610134-0	8-98171254-0	N*,QKR	FRT	INNER
4	5-87610134-0	9-00093172-0	N*,QKR	FRT	OUTER
5	5-87610138-0	8-94258819-0	TF*,UBS,UC*	FRT	INNER
6	5-87610136-0	8-94227041-0	TF*,UBS,UC*	FRT	OUTER
7	5-87610137-0	8-94242683-0 9-00093124-1	PHR,TBR,TF*	FRT	INNER
8	5-87610135-0	8-94242913-0	PHR,TBR,TF*	FRT	OUTER
9	1-87610138-0	1-09812257-0	EX*,CX*,CY*,F*	RR	INNER
10	1-87610136-0	1-09812256-0	EX*,CX*,CY*,F*	RR	OUTER
11	1-87610160-0	8-98156814-0	FRR,FS*	RR	OUTER
12	5-87610141-0	9-00093624-0	N*	RR	INNER
13	5-87610139-0	9-00093607-0	N*	RR	OUTER
14	5-87610142-0	9-00093081-0	N*,QKR	RR	INNER
15	5-87610140-0	9-00093082-0	N*,QKR	RR	OUTER

SHACKLE BUSHINGS

No	BVP Part Number	Corresponding Genuine Part Number	Vehicle Model
1	1-87610163-0	8-98081830-0	FS*,FT*
2	5-87610160-0	8-94113323-2	NHR,NKR,NLR,PHR
3	5-87610161-0	8-94234319-0 8-97357492-0	TBR,TFR,UBS,UC*

TRUNNION SHAFT BUSHING

No	BVP Part Number	Corresponding Genuine Part Number	Vehicle Model
1	1-87610177-0	8-98081832-0	EXZ,CX*,CY*,FV*,FXZ



LEAF SPRING BUSHINGS

No	BVP Part Number	Corresponding Genuine Part Number	Vehicle Model
1	1-87610164-0	1-51351010-0	EXR,CVR,F*
2	5-87610163-0	8-97074826-0	N*
3	5-87610162-0	8-97034380-0	N*,QKR

TORQUE ROD BUSHINGS

No	BVP Part Number	Corresponding Genuine Part Number	Vehicle Model	Engine Model
1	1-87411074-2	1-51519113-0 1-51519166-1	EX*,CX*,CY*,FV*,FXZ	6W*,10P*
2	1-87610082-0	1-51519143-0 1-51519066-2	EXZ,CX*,FXZ,FVZ	6U*



SHOCK ABSORBER

No	BVP Part Number	Corresponding Genuine Part Number	Vehicle Model	FRT / RR
1	1-87610154-0	1-51630417-0	EX*,C*,FX*	FRT
2	1-87610155-0	1-51630579-0	FTR,FV*	FRT
3	1-87610153-0	1-51630180-4	FS*,FT*,FV*	FRT
4	5-87610129-1	8-98380950-0	NNR,NPR,NQR	FRT
5	5-87610151-0	8-98381014-0	NHR	FRT
6	5-87610127-1	8-98381008-0	NKR,NQR	FRT
7	5-87610159-0	8-98316235-0 8-98380997-0	NLR,NMR	FRT
8	5-87610128-1	8-98381015-0	NNR,NPR,NQR	FRT
9	5-87610153-0	8-98380994-0	NNR,NPR,NQR	FRT
10	5-87610152-0	8-97260214-1 8-98381013-0	NKR,NQR	FRT
11	5-87610126-1	8-94446373-1	TF*	FRT

WIPER BLADES

No	BVP Part Number	Corresponding Genuine Part Number	TYPE	Spec.
1	5-87610032-1	8-94317671-0 8-97136362-1 8-97136363-1 8-98193815-0	U-HOOK TYPE	L=450mm
2	5-87610034-1	1-83315047-2 8-97134561-2 8-97134563-2 8-98053788-0 8-98053789-0 8-98079088-0	U-HOOK TYPE	L=500mm
3	5-87610035-1	1-83315045-2 1-83315046-2 1-86810019-0 1-86810020-0 1-86810029-0 8-97349900-0 8-97351484-0	U-HOOK TYPE	L=550mm

No	BVP Part Number	Corresponding Genuine Part Number	Vehicle Model	FRT / RR
12	5-87610133-0	8-98380744-0	NNR,NPR,NQR	RR
13	5-87610155-0	8-98320085-0	NKR,QKR	RR
14	5-87610156-0	8-97253662-2 8-98356508-0	NNR,NPR,NQR	RR
15	5-87610132-0	8-98316233-0 8-98302473-0	N*,QKR	RR
16	5-87610131-0	8-98350705-0	NHR	RR
17	5-87610130-0	8-94473186-0	TFR,TFS	RR
18	5-87610154-0	8-94473187-0	TFR,TFS	RR



UNIVERSAL CLUTCH BOOSTERS

No	BVP Part Number	Corresponding Genuine Part Number	Dia. of Power Cylinder	Screw Size of Air Inlet Connector	Vehicle Model
1	1-87610083-0	1-31800329-3 1-31800388-4 1-31800360-1 1-31800389-3 1-31800383-4	Ø70	Rc1/4-19	F*
2	1-87610084-0	1-31800349-6 1-31800508-3 1-31800358-3	Ø70	Rc1/4-19	F*
3	1-87610085-0	1-31800292-0 1-31800398-2 1-31800499-3 1-31800431-2 1-31800126-0 1-31800158-0 1-31800127-0 1-31800291-1 For these P/Ns, please use GUARD (1-31829062-0) together.	Ø70	M14 x 1.5	F*
4	1-87610086-0	1-31800228-0 1-31800364-3 1-31800350-3 1-31800392-3 1-31800406-4	Ø70	M14 x 1.5	FT*,FV*,FX*
5	1-87610159-0	1-31800512-4 1-31800525-2	Ø70	Rc1/4-19	FRR,FSS,FVR
6	1-87610088-0	1-31800072-0 1-31800284-1 1-31800140-0 1-31800344-0 1-31800157-0 1-31800352-2 1-31800172-0 1-31800387-5 1-31800524-0	Ø90	M14 x 1.5	EXZ,CHR,CVR,CX*,FV*
7	1-87610089-0	1-31800511-3 1-31800516-2	Ø90	M14 x 1.5	FRR,FS*,FT*,FV*
8	1-87610091-0	1-31800466-1 1-31800490-3 1-31800468-0 1-31800491-1 1-31800488-2	Ø105	M14 x 1.5	EX*,CVR,CX*,CY*
9	1-87610092-0	8-97485078-0 8-97485080-0 1-31800495-1	Ø105	Rc3/8-19	CX*,CY*



BRAKE LINING KITS

No	BVP Part Number	Corresponding Genuine Part Number (1 Axle)	LINING WIDTH (NUMBER of LINING)	Vehicle Model	ECE R90
1	1-87610174-0	1-88310775-1 (1 Wheel) X 2 Sets	220mm (8pcs)	EX*,CY*, FX*,FV*, GX*	Yes (E)
2	1-87610132-0			No	
3	1-87610184-0	1-88310521-0 (Leading, 1 Axle) + 1-88310523-0 (Trailing, 1 Axle) or 1-88310529-0 (1 Wheel) X 2 Sets or 1-88311359-0 (1 Wheel) X 2 Sets	180mm (8pcs)	EX*,CX*, CVR,FTR, FV*,FV*, FYH	Yes (E)
4	1-87610129-0			No	
5	1-87610173-0	1-88311314-0 (1 Wheel) X 2 Sets	160mm (8pcs)	EXR,EXZ, CVR,CX*, FTR,FV*, FYH,GVR	Yes (E)
6	1-87610128-0			No	
7	1-87610183-0	1-88310497-0 (Leading, 1 Axle) + 1-88310499-0 (Trailing, 1 Axle) or 1-88310495-0 (1 Wheel) X 2 Sets or 1-88311353-0 (1 Wheel) X 2 Sets	140 mm (8pcs)	EXR,EXZ, CVR,CX*, FTR,FV*, FYH,GVR	Yes (E)
8	1-87610125-0			No	
9	1-87610131-0	1-88310551-0 (1 Wheel) X 2 Sets	145 mm (8pcs)	FRD,FRR, FTR,FVR	No
10	1-87610130-0	1-88310525-0 (1 Axle)	115mm (4pcs)	FSR,FSS	No
11	1-87610127-0	1-88310505-0 (1 Axle)	115mm (4pcs)	FRR,FSR, FSS,FTR	No
12	1-87610126-0	1-88310501-1 (1 Axle)	110mm (4pcs)	FRR,FSR	No
13	5-87610228-0	5-87831692-0 (1 Axle)	120mm (4pcs)	NPR,NOR, NMR	Yes (E)
14	5-87610229-0	5-87831774-0 (1 Axle)	100mm (4pcs)	NPS,N*R	Yes (E)
15	5-87610230-0	5-87831801-0 (1 Axle)	75mm (4pcs)	NPS,N*R	Yes (E)

IMPORTANT
• One kit includes Linings and Rivets for one axle.



SHOE KITS

No	BVP Part Number	Corresponding Genuine Part Number (1 Axle)	LININGWIDTH (NUMBER of LINING)	Vehicle Model	ECE R90
1	5-87610123-0	5-87832045-0 (1 Axle) or 8-97035085-1 X 4 pcs	75 mm (4pcs)	NHR,NKR,NLR,NMR	No
2	5-87610122-0	5-87832084-0 (1 Axle)	60 mm (4pcs)	NHR,NLR,NMR	No

IMPORTANT
• These Shoes have similar performance as genuine parts. However, we have not acquired the ECE R90 yet. Therefore, we may not sell these parts to the countries where the above regulations are required.



■ BRAKE PAD KITS / CLIP KITS / SHIM KITS

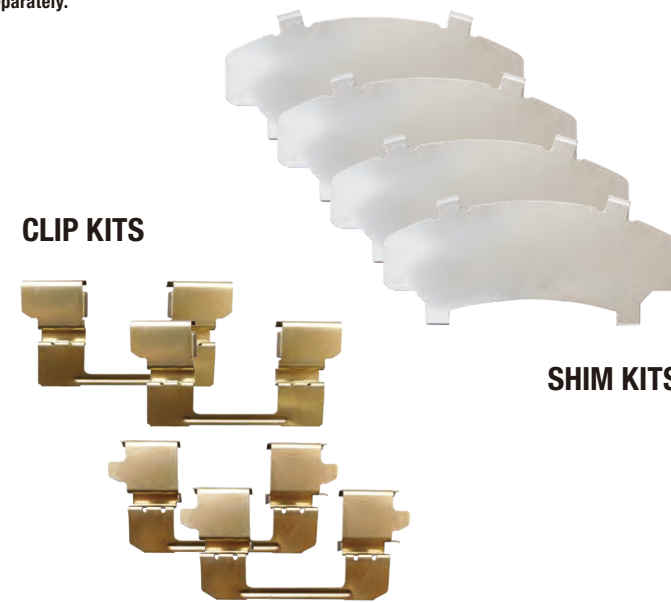
No	BVP Part Number	Genuine Part Number	Description	Vehicle Model	Qty to use per kits	Corresponding Genuine Part Number	ECE R90
1	5-87610238-0	—	PAD KIT; CALIPER, DISC BRK, FRT	N*R	1	8-98216922-0	No
	5-87610241-0	—	CLIP KIT; BRAKE PAD		1		
	5-87610242-0	—	SHIM KIT; BRAKE PAD		1		
2	5-87615026-0	—	PAD KIT; CALIPER, DISC BRK, FRT	TF*,UC	1	8-97947466-0 8-97947571-0	Yes E9
	5-87615031-0	—	CLIP KIT; BRAKE PAD, FRT		1	8-97947996-0 8-98079104-0	
	5-87615032-0	—	SHIM KIT; BRAKE PAD, FRT		1	8-98298384-0	
3	5-87615027-0	—	PAD KIT; CALIPER,RR	UC	1	8-98232543-0	Yes E9
	5-87615033-0	—	CLIP KIT; BRAKE PAD, FRT		1		
	5-87615034-0	—	SHIM KIT; BRAKE PAD, FRT		1		
4	5-87615025-0	—	PAD KIT; CALIPER, DISC BRK, FRT	TF*,UC	1	8-98051114-0 8-98051115-0 8-98051116-0 8-98051117-0	Yes E9
	5-87615035-0	—	SHIM KIT; BRAKE PAD, FRT		1		
	Not Applicable	8-98049935-0	SPRING; ANTI RATTLE		1		
	Not Applicable	8-98049936-0	SPRING; ANTI RATTLE		1		

IMPORTANT

- A set of genuine pad kit is composed pad,shim,and clip whilst BVP is needed to order separately.



PAD KITS



CLIP KITS

SHIM KITS



■ Best Value Parts DISPLAY RACK

BVP Part Number
1-87996552-0



ATTENTION

- Displayed parts do not include in the DISPLAY RACK.

■ WHEEL PIN SETS

No	BVP SET Part Number	Corresponding Genuine Part Number				Vehicle Model	FRT / RR	Right / Left
		DRUM NUT	WHEEL PIN	INNER NUT	WHEEL NUT			
1	5-87610169-0	0-91110522-0	8-97081584-4	—	8-97359807-0	N*	FRT	Right
2	5-87610170-0	0-91110522-0	8-97081585-4	—	8-97359808-0	N*	FRT	Left
3	5-87610171-0	0-91110522-0	8-97131283-3	—	8-97359807-0	N*	FRT	Right
4	5-87610172-0	0-91110522-0	8-97131284-3	—	8-97359808-0	N*	FRT	Left
5	5-87610208-0	0-91110520-0	8-94383436-2	—	8-98007907-0	N*	FRT	Right
6	5-87610209-0	0-91110520-0	8-94383437-2	—	8-98007908-0	N*	FRT	Left
7	5-87610210-0	0-91110520-0	8-97017043-2	—	8-98007907-0	N*	FRT	Right
8	5-87610211-0	0-91110520-0	8-97017044-2	—	8-98007908-0	N*	FRT	Left
9	5-87610214-0	—	8-97168456-2	—	8-97359807-0	N*	FRT	Right
10	5-87610215-0	—	8-97168457-2	—	8-97359808-0	N*	FRT	Left
11	5-87610173-0	0-91110522-0	8-97081584-4	8-97359805-0	8-97359809-0	F*,N*	RR	Right
12	5-87610174-0	0-91110522-0	8-97081585-4	8-97359806-0	8-97359810-0	F*,N*	RR	Left
13	5-87610212-0	0-91110520-0	8-94383436-2	8-98007810-0	8-98007824-0	N*	RR	Right
14	5-87610213-0	0-91110520-0	8-94383437-2	8-98007811-0	8-98007825-0	N*	RR	Left
15	5-87610216-0	—	9-42331605-5	—	8-98007905-0	NKR,NLR, NMR,QKR	FRT / RR	Right
16	5-87610217-0	—	9-42332605-5	—	8-98007906-0	NKR,NLR, NMR,QKR	FRT / RR	Left
17	1-87610227-0	1-09400071-0	1-42337067-1	—	1-42333055-0	EX*,CY*,CY* FTR,FV*,FX*	FRT	—
18	1-87610228-0	—	1-42337066-2	—	1-42333055-0	EX*,CY*,CX*, FV*,FX*,FYH	RR	—
19	1-87610229-0	1-09400071-0	1-42337069-1	—	1-42333055-0	EX*,CX*,CVR FTR,FV*,FXZ,	RR	—



WARRANTY

(In case of General Export with ISUZU's Warranty)

VEHICLE WARRANTY

For the normal regular maintenance, BVP can be fitted on the vehicle within the warranty period. The use of BVP does not invalidate Vehicle Warranty, unless they are direct cause of Vehicle failure.

PARTS WARRANTY

The consumption parts, e.g. Filters and Friction Parts (Clutch Disc, Brake Lining, etc.) are not covered by the Warranty Programme even if they are Genuine parts. ISUZU will cover the warranty for these items if they are clearly defective due to defective materials or insufficient workmanship.

BVP other than the above ones, are covered by warranty for 90 days or 3,000 km from the date of installation whichever comes earlier, which is the same as the Genuine Parts.